



Powerful and robust electric pallet truck for intensive use. Ideal for special applications.

The 300K electric low lift walk behind pallet trucks are ideal for heavy duty applications and horizontal loads handling. Ideal for warehouses with short travel distances and small spaces. The high-capacity battery ensures long battery life. The 330 K pallet trucks are ideal for various special applications.

Electronic system

The 330 K pallet trucks are equipped with highly efficient and reliable DC electronic devices. The controls are equipped with anti roll-back devices which control and check all machine functions and allow unlimited adjustments for performance optimisation, adapting the truck to the operation to be carried out. All electric drive and braking parameters can be set electronically from a control panel, according to customer's requirements. All models are equipped with timer and battery level indicator with auto-lock function that switches on once 80% of the battery capacity is discharged.

Drive

Powerful and reliable DC traction motors, able to satisfy even the most demanding requests for performance, providing the necessary amount of power every time, as the speed of the truck can be adjusted by changing

the position of the throttle.

Braking system

There are three braking systems in this range:

- braking by reversing the running direction and releasing the throttle (service braking that can be adjusted from the control panel);
- emergency braking that takes place automatically if the tiller is suddenly released or lowered (electromagnetic brake);
- parking brake.

Frame

Made of bended sheet metal to minimise any tensions induced by welds, ensuring maximum mechanical resistance over time. The battery compartment can be easily opened by lifting the cover, simplifying the daily and

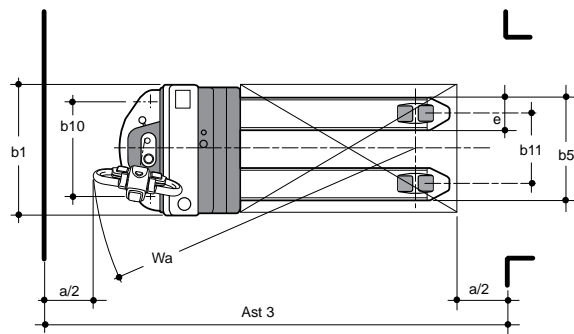
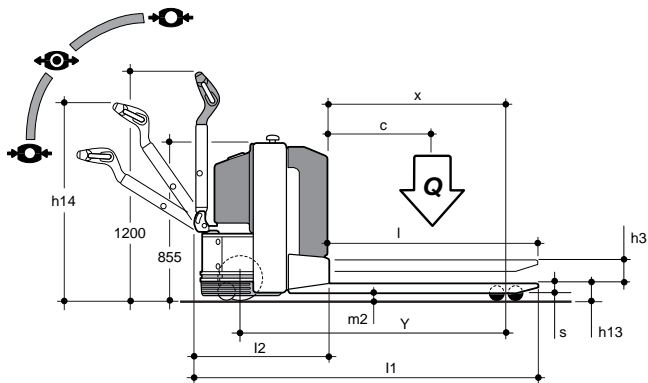
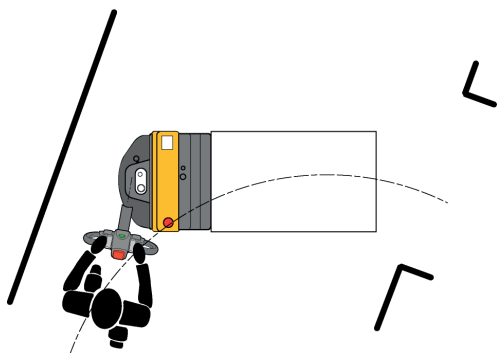
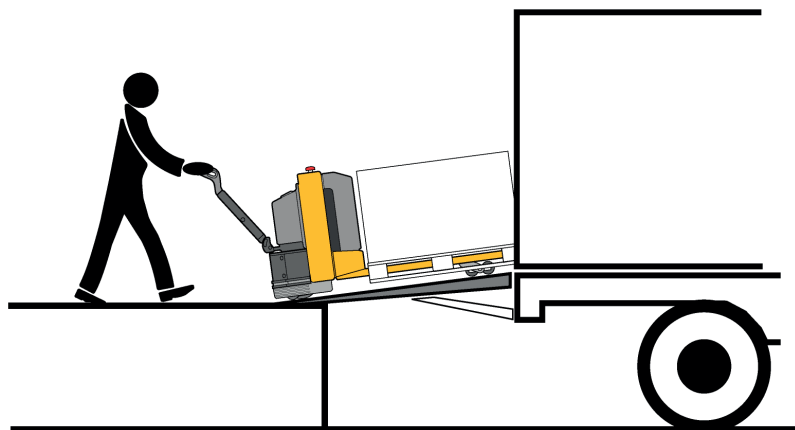
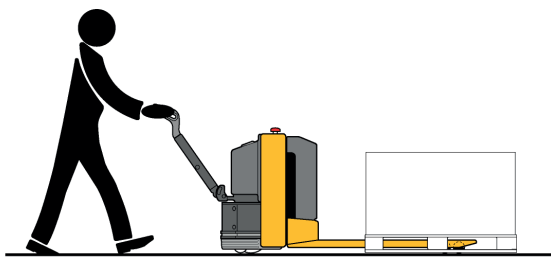
periodical battery recharge and check operations. Particular attention has been paid to provide easy access to wear parts, minimising therefore the routine maintenance costs. The forks are made of high strength steel. The frame has been painted using cutting edge equipment.

Tiller

Result of a meticulous ergonomic study that combines operating comfort with modern industrial design. The tiller is fitted with easy to reach controls, ensuring enhanced productivity, precision and efficiency. When released, the tiller returns smoothly to its vertical position thanks to the gas spring

fitted with slowdown limit switch.

- tiller head made of ABS with steel core, able to absorb heavy impact without deformation;
- push-buttons located on both sides of the tiller for lifting and lowering the forks;
- acoustic warning button in the centre of the tiller head;
- active safety system with suitably positioned anti-crush device



Characteristics	1.1	Manufacturer			OMG S.r.l. Single member company
	1.2	Model			330 K
		Execution			
	1.3	Operation			E
	1.4	Operator position			at ground level
	1.5	Capacity	Q	t	3.0
	1.6	Load centre of gravity	c	mm	600
	1.8	Load distance	x	mm	980
	1.9	Wheel centre distance	y	mm	1,460
Weights	2.1	Truck weight incl. battery (see line 6.5)		kg	638
	2.2	Weight on axis with front / rear load		kg	1,214/2,440
	2.3	Weight on axis without front / rear load		kg	504 / 134
Wheels Frame	3.1	Wheels and tyres		mm	polyurethane
	3.2	Front wheels size		mm	245 / 100
	3.3	Rear wheels size		mm	85
	3.4	Stabiliser wheels size		mm	100
	3.5	Number of front / rear wheels (x = drive)		no.	1x + 2 / 4
	3.6	Front track	b10	mm	500
	3.7	Rear track	b11	mm	380
Base dimensions	4.4	Forks lifting stroke	h3	mm	120
	4.9	Tiller height in min. /max. driving position	h14	mm	890 / 1,200
	4.15	Forks lowered height	h13	mm	85
	4.19	Overall length	l1	mm	1,875
	4.20	Length including forks heel	l2	mm	725
	4.21	Overall width	b1/b2	mm	710
	4.22	Forks size	s/e/l	mm	60/180/1,150
	4.25	Width over forks	b5	mm	560
	4.32	Clearance at mid stroke	m2	mm	25
	4.33	Working aisle width with 1000 x 1200 transversal pallet	Ast	mm	
	4.34	Working aisle width with 800 x 1200 longitudinal pallet	Ast	mm	2,240
4.35	Turning radius	Wa	mm	1,820	
Performance	5.1	Speed with / without load		km/h	5.8 / 6
	5.2	Lifting speed with / without load		m/s	0.04 / 0.05
	5.3	Lowering speed with/without load		m/s	0.26 / 0.06
	5.8	Max. feasible gradient with / without load		%	10 / 18
	5.10	Service brake			Reverse
Electric motors	6.1	Traction motor, 60 min performance with S2		kW	2
	6.2	Lift motor, 15% performance with S3		kW	2
	6.3	Battery as per DIN 43531 / 35 / 36 A, B, C, no			no
	6.4	K5 battery voltage, nominal capacity		V/Ah	24 / 230
	6.5	Battery weight (± 5 %)		kg	200
	6.6	Power consumption as per VDI cycle		kW/h	
Miscellaneous	8.1	Start control type			MOS DC
	8.4	Noise threshold as per EN 12 053		dB(A)	< 70
					* optional

Technical data sheet referring to pallet truck in standard version; data determined in compliance with VDI 2198. These values may differ if your product is fitted with other types of wheels and tires, supports and accessories. All data and images herein are indicative, OMG S.r.l. Single member company reserves the right to modify the documentation without prior notice.

Accessories and special features

double front roller		width over forks 680 mm	
width over forks 540 mm		anti-slip drive wheel	
polyurethane drive wheel		low speed push-button with tiller in vertical position	
electronic braking system		cold store guard	
electronic speed control		special setup for transporting reels	
electromagnetic parking brake		version with lifting platform	
battery level indicator-timer		central battery filling system with tank	

standard



optional

